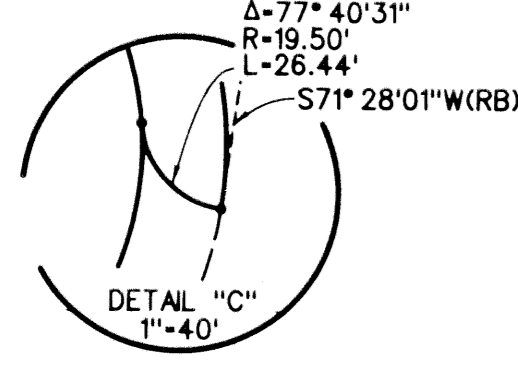
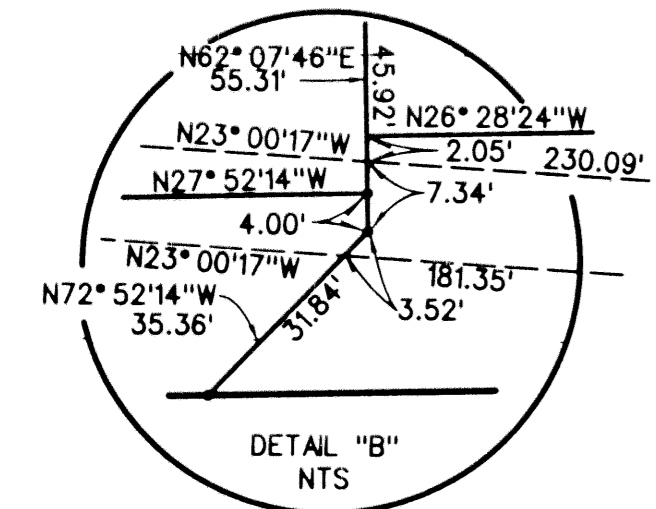
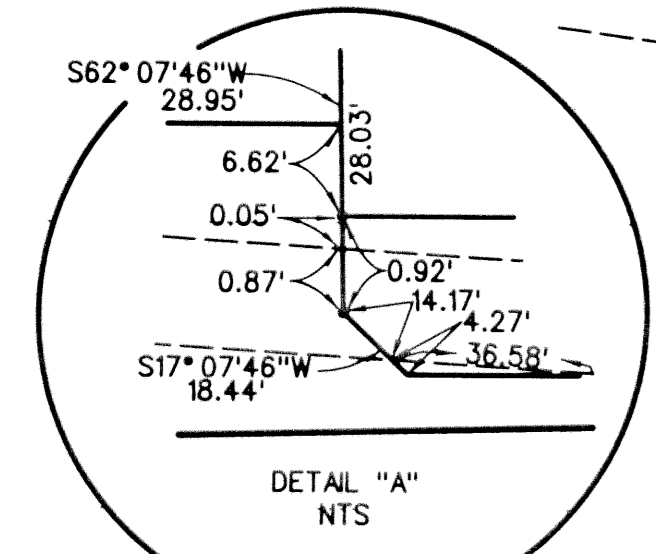
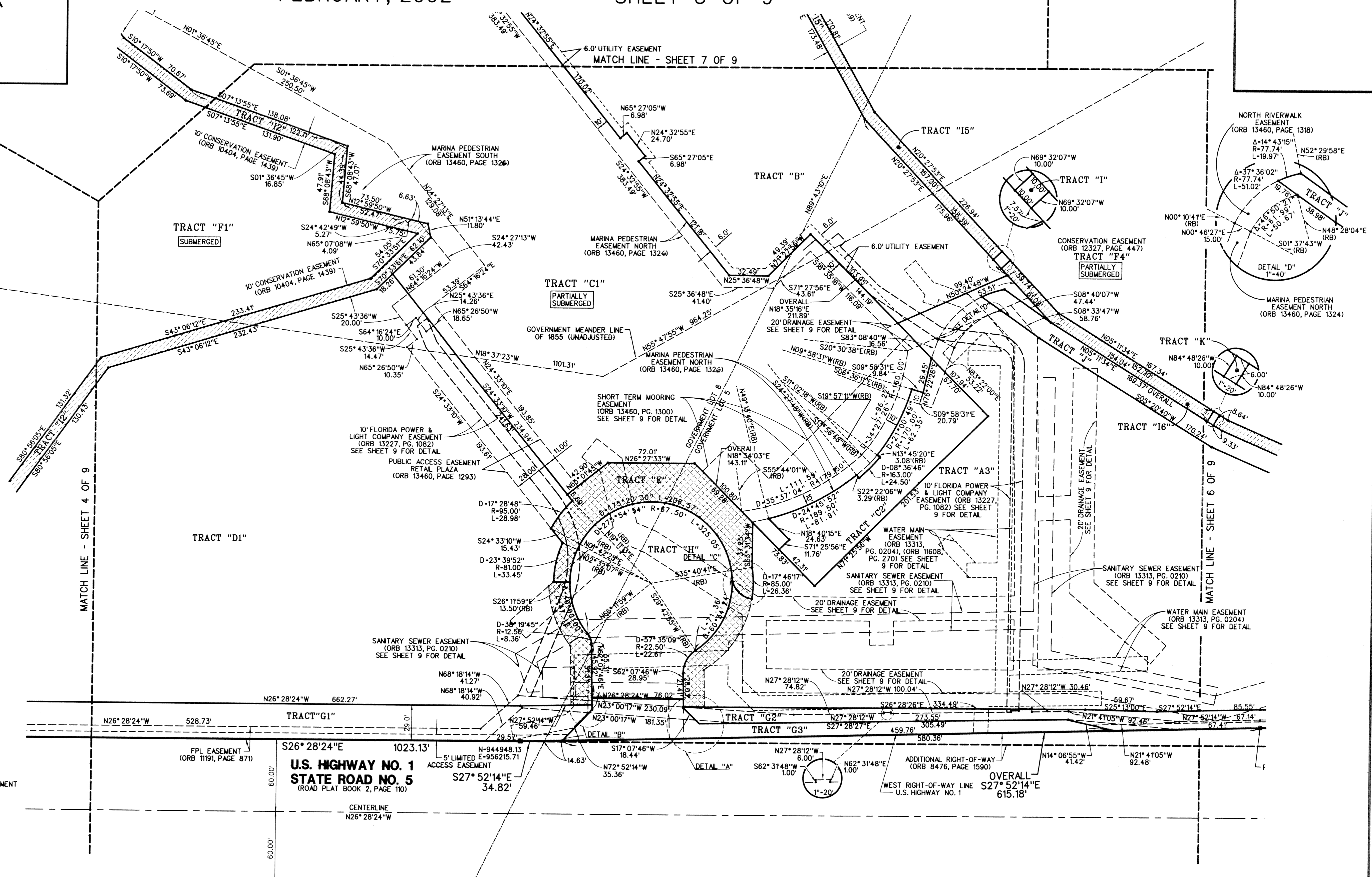
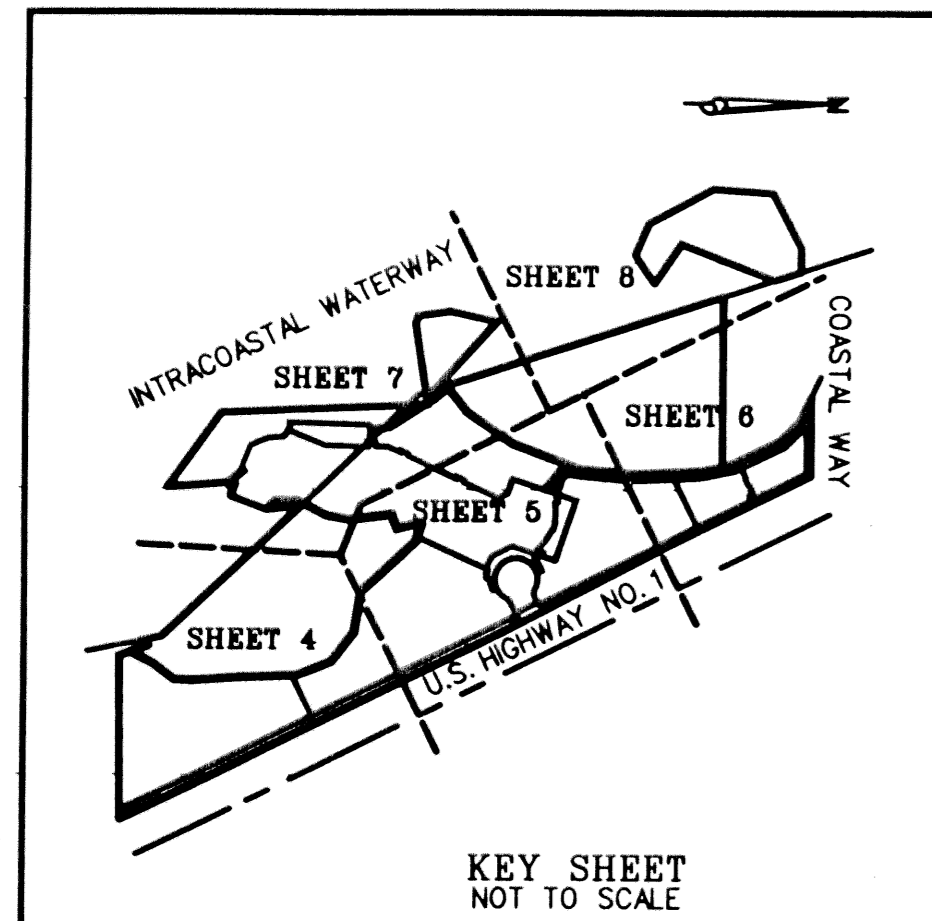
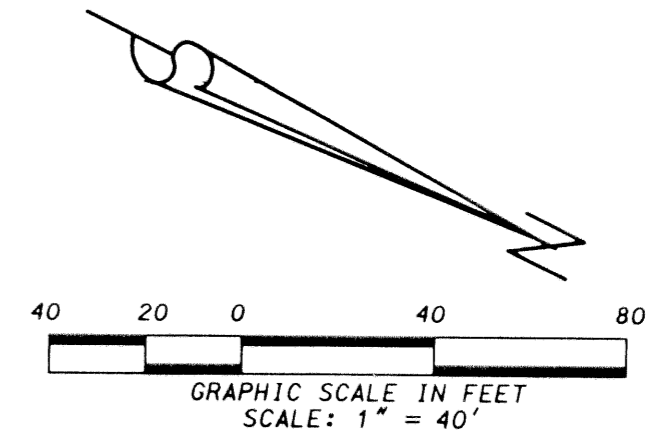


# JUPITER YACHT CLUB

BEING A PORTION OF SECTION 6, TOWNSHIP 41 SOUTH, RANGE 43 EAST,  
TOWN OF JUPITER, PALM BEACH COUNTY, FLORIDA

FEBRUARY, 2002

SHEET 5 OF 9



**LEGEND:**  
 = LIMITS OF PUBLIC ACCESS EASEMENT  
 = MAIN ENTRY CIRCLE PER ORB 13460, PAGE 1286 SEE SHEET 2 FOR DETAIL  
 = 10.00' CONSERVATION EASEMENT PER ORB 10404, PAGE 1439

**ABBREVIATIONS:**  
FND = FOUND  
FPL = FLORIDA POWER & LIGHT  
NTS = NOT TO SCALE  
ORB = OFFICIAL RECORD BOOK  
PB = PALM BEACH  
POB = POINT OF BEGINNING  
POC = POINT OF COMMENCEMENT  
RB = RADIAL BEARING  
SRD = STATE ROAD DEPARTMENT  
SF = SQUARE FEET  
TL = TIE LINE

**LIDBERG LAND SURVEYING, INC.**  
675 West Indiantown Road, Suite 200,  
Jupiter, Florida 33458 TEL. 561-745-8454

|  |              |      |                |
|--|--------------|------|----------------|
| CAD. K:\UST \ 064143 \ JYCMG01 \ 2717306 \ SHEETS.DGN  |              |      |                |
| REF. K:\UST \ 064143 \ JYCMG01 \ 2717306 \ 2717306.DGN |              |      |                |
| OFF. R.W.  | FB.          | PG.  | JOB 97-271-306 |
| CKD. D.C.L.  | SHEET 5 OF 9 | DWG. | DATE 10-04-01  |